

G38

### Type II diabetes set

Minature brain, eye, heart, kidney, artery, pancreas, neuron, and foot models. Education card illustrates effects associated with Type II diabetes: Stroke, non-inflammatory disease of the retina, hypertensive heart disease, hardening of the kidney, hardening of the arteries, insulin resistance, neuropathy, foot ulcerations. Comes with stand and education card.

Size: appr. 25 cm

Ref.no. G38

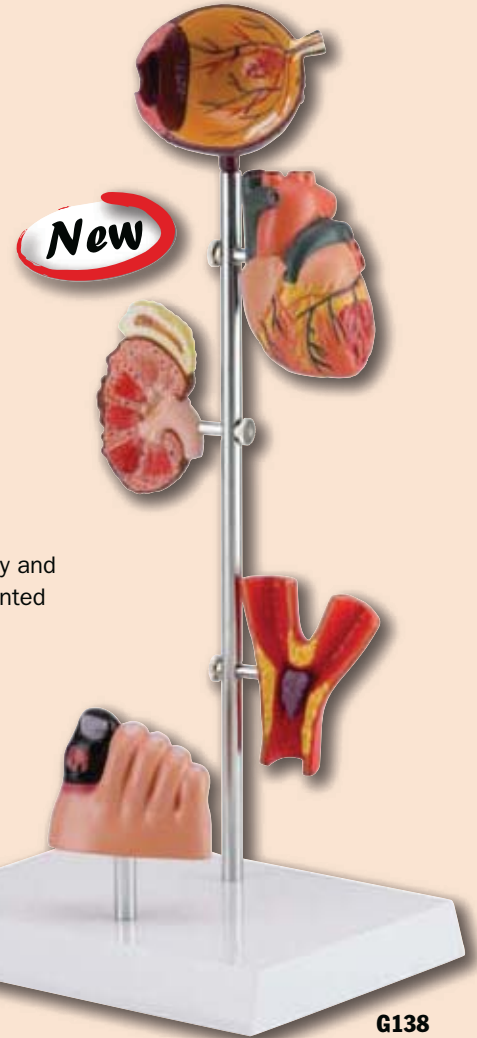
### Effects of Diabetes, 5 parts

This model shows the effects of diabetes on eye, heart, kidney and foot. The organs can be rotated for detailed examination. Mounted on stand.

Size: 16.5 x 12 x 36 cm

Weight: 0,4 kg

Ref.no. G138



G138

**!** You will find more Diabetes - Models on the pages 127/128

### Diabetic injection pad, advanced version

Unlike other injection pads this advanced pad gives the opportunity to practice with a normal and a hardened abdominal wall. It allows the student to form a realistic fold for injection. Due to special material it gives a lifelike impression of touch and feel, almost like in a real patient.

The model is perforation proof and can be attached to the students' body using a flexible band.

Ref.no. 7070



7070

