

**E110**

**Ear, 3 parts**

3X life size. Model shows details of the external, middle and inner ear. The eardrum with malleus, incus and stapes are removable. The other removable part is composed of the cochlea and labyrinth with vestibular and cochlear nerves.

Mounted on base.  
**Size: 33 x 23 x 21 cm**  
**Weight: approx. 1 kg**  
**Ref.no. E110**



**E150**

**Ear, 5 parts**

3X life size. Model shows the external, middle and inner ear. The eardrum with malleus, incus and stapes are removable. The other removable part is composed of the cochlea and labyrinth with vestibular and cochlear nerves. The model has two removable bone covers.

Mounted on base.  
**Size: 33 x 23 x 21 cm**  
**Weight: approx. 2 kg**  
**Ref.no. E150**



**E220**

**Ear model, 1.5 times life size**

This slightly enlarged model of a human ear with detailed reproduction of all anatomical details shows the auditory canal, the tympanic membrane, malleus, incus, stapes and cochlea. Surrounding bony structures are visible as well as muscular and cartilaginous tissues. A perfect model for desktop use.

**Size: 11 x 9 x 5 cm**  
**Ref.no. E220**



**E20**

**Ear model, life size**

This model shows outer, middle and inner ear in real size and position. It shows the eardrum with hammer and anvil as well as the labyrinth with stirrup and cochlea.

On stand.  
**Size: 10 x 6.5 x 7.5 cm**  
**Ref.no. E20**



**E25**

### Child Ear

One and one half times the size of a Child's Ear. Illustrating semi-circular canals and cochlea of the inner ear; auditory ossicles, otitis media (inflammation and simulated fluid in the middle ear); tympanic membrane and temporal and tympani muscles; the model also presents a horizontal eustachian tube typical of a child.

**Size: 12 x 10 x 9 cm**

**Base: 16 x 13 cm, Weight: 0.5 kg**

**Ref.no. E25**

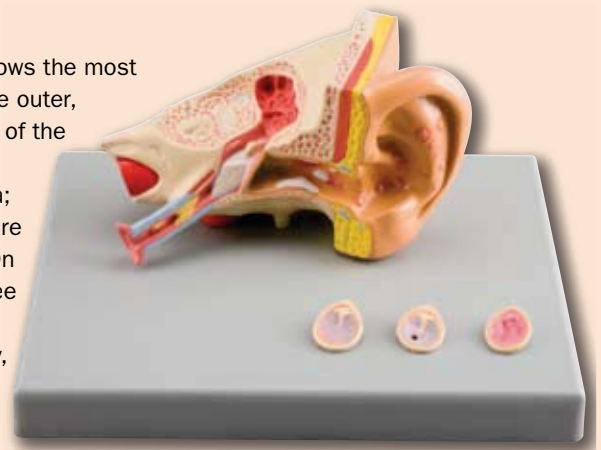
**Ear Diseases**  
This 1.5 times life size model shows the most common pathologies affecting the outer, middle and inner ear. At the level of the Eustachian tube you can see the mucus and secretory otitis media; the cholesteatoma and eczema are also represented in high detail. On the additional relieves you can see a comparison of three different eardrums; the first one is healthy, the second one exhibits a perforation and the third one is showing the bullous myringitis.

Mounted on base.

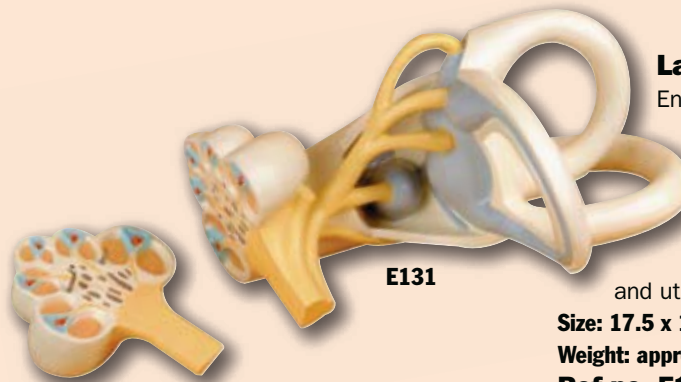
**Size: 20 x 15 x 10 cm**

**Weight: 0.25 kg**

**Ref.no. E135**



**E135**



**E131**

### Labyrinth, 2 parts

Enlarged about 18 times.

Composed of 2 parts.

The superior semicircular canal and vestibule are open, showing the saccule and utricle.

**Size: 17.5 x 13.5 x 33 cm**

**Weight: approx. 0.9 kg**

**Ref.no. E131**



**E132**

### Cochlear duct and organ of corti

350X life size; composed of 5 parts. This model shows a three dimensional section of the cochlear duct, tectorial membrane, basilar membrane and vestibular membrane. The organ of Corti is well represented, including the cellular acoustics receptors that transform sound vibrations to electric signals.

**Size: 47.5 x 18 x 32 cm**

**Weight: approx. 3.9 kg**

**Ref.no. E132**



**E136**

### Cochlea and corti's organ

This single piece model is a useful tool to study the mechanism of sound reception. The model shows an enlarged section of the cochlea and Corti's organ including hair cells, tectorial and basilar membrane.

Mounted on board.

**Size: 40 x 26 x 5 cm**

**Weight: 1.2 kg**

**Ref.no. E136**



**E130**

### Ear ossicles

This model represents the malleus, incus and stapes, enlarged about 20 times.

**Size: approx. 23 x 25 x 23 cm**

**Weight: approx. 0.4 kg**

**Ref.no. E130**



**R10124**

### Ear with Equilibrium Demonstration, 3-part

At 5 times life size, the surrounding temporal bone of the skull has been sagittally sectioned along the entire length of the auditory canal and Eustachian tube. This simplifies tracing the path of sound waves entering the ear and makes it quite evident how pressure is equalized on both sides of the eardrum. The overlying petrous portion of the temporal bone has also been cut away exposing the entire middle ear chamber and the labyrinth. The malleus, incus and the attached seethrough tympanic membrane are removable, as is the entire labyrinth consisting of cochlea, vestibule, semicircular canals, auditory nerve and stapes. Two of the three semicircular canals are made of transparent plastic tubes filled with coloured fluid representing the endolymph. A visible air bubble in each tube will shift position when tilted, demonstrating the function of the canals in maintaining equilibrium. A spiral cutaway of the cochlea shows its three canals in contrasting colours to enhance teaching the concept of pitch.

**Size: 41 x 28 x 18 cm**  
**Ref.no. R10124**



### Ear examination Simulator

This simulator is perfect for training the examination of the external acoustic meatus and tympanic membrane. It is designed for training in distinguishing cases and also practicing earwax and foreign body removal.

**Supplied with 11 pair of ears with the following cases:**

- Normal
- Normal with wider auditory canal
- Serous otitis media; SOM
- Mucoïd otitis media; MOM
- Chronic suppurative otitis media; CSOM
- Acute suppurative otitis media; AOM
- Cholesteatoma
- Tympanosclerosis
- Traumatic perforations
- Cerumen block
- Practice of foreign substance removal

Supplied with simulated earwax, small toy and small sponge sphere for training at removing foreign bodies.

**Size: 42 x 22 x 38 cm**

**Weight: approx. 2 kg**

**Ref.no. R16110**



**R16110**



**LM02**

### Transparent Ear model

This excellent model shows the outer and inner structure of the ear from the outer ear to the eardrum. This multi-purpose model can be used for patient information or medical education. The flexible material allows to use this model also as training aid for audiphone insertion.

**Ref.no. LM02**



## Ear examination simulator

This simulator allows practice in the examination of the ear. It consists of a head with 6 interchangeable flexible ears with lifelike external and internal structures. Embedded colored prints in 5 out of the 6 ears allow the diagnosis of various pathologies. One ear is not colored, but can be used for earwax removal exercises. The simulator is supplied with 2 tubes of synthetic earwax, nine 35mm slides (5 conditions as below plus 4 conditions of our supplementary set) and a carry-on-case. An Otoscope is not included.

**The following normal conditions and pathologies can be observed:**

- Normal tympanic membrane
- Mucoid otitis media
- Serous otitis media with fluid level
- Chronic otitis media with perforation
- Normal tympanic membrane with slanted ear canal

**Size: 38 x 38 x 26 cm**

**Weight: 7.7 kg**

**Ref.no. R10029**

## Supplementary ears

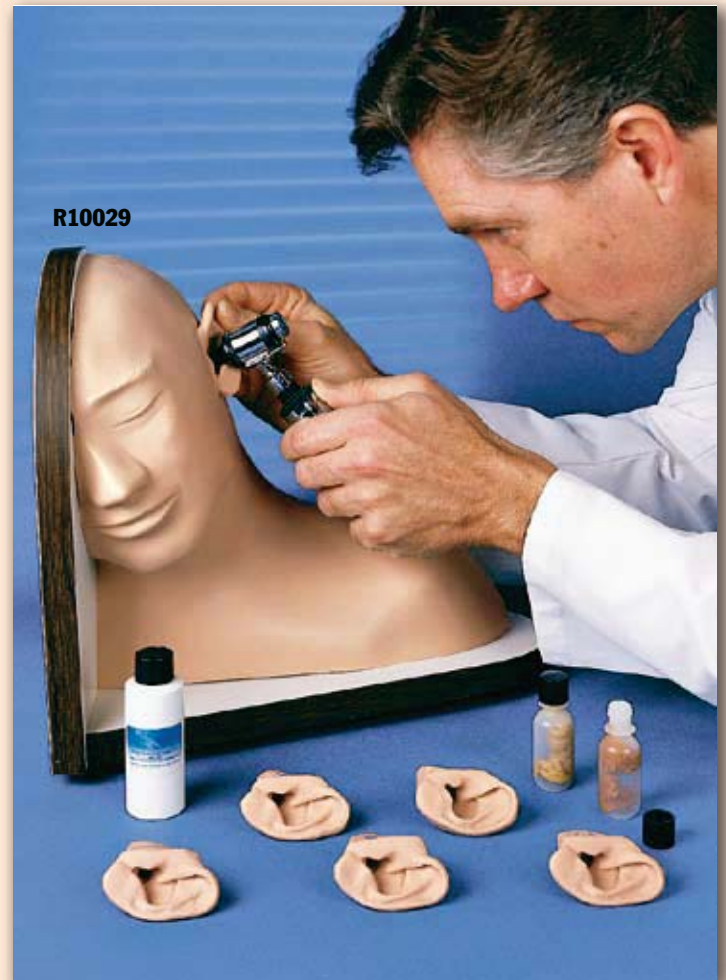
**This set includes 4 ears on which allow observation of the following pathologies:**

- Chronic otitis media with large perforation
- Attic cholesteatoma (A)
- Attic cholesteatoma (B)
- Atelectatic middle ear otitis and tympanosclerosis

**Size: 19.5 x 16 x 4.5 cm**

**Weight: 0.3 kg**

**Ref.no. R10029/1**



## Diagnostic and procedural ear trainer

Now with this new trainer, students, residents, and practicing physicians can master the skills needed to examine the human ear using visual cues, correctly diagnose common diseases, clean the ear canal, remove a foreign body, and perform a myringotomy with ear tube insertion. The Diagnostic and Procedural Ear Trainer is anatomically correct. Life-like right and left ears teach diagnostic and procedural techniques and are removable for easy maintenance and storage. For the ultimate in realism, the middle ear can be filled with various fluids. The instructor controls the color and consistency of the fluids.

**Another feature that brings this trainer as close to life as possible is the inclusion of nine diagnostic cartridges with full-colour photo prints illustrating:**

- Normal tympanic membrane
- Mucoid otitis media
- Serous otitis media with an air-fluid level
- Chronic otitis media with small and large tympanic membrane perforations
- Two views of attic cholesteatoma
- Atelectatic middle ear otitis
- Tympanic sclerosis

Trainer comes complete with two ears, approximately 100 pre-cut eardrums, specially formulated ear wax, one standard middle ear cartridge with syringe, adjustable stand, and a hard carry case. Otoscope, ventilation tubes, and surgical instruments are not provided.

**Weight: 5 kg Ref.no. R10900**

## Pneumatic Otoscopy Kit

This option offers an additional feature for the Diagnostic and Procedural Ear Trainer. While pneumatic otoscopy is indispensable for examination of the ear, studies have shown that most are performed incorrectly! Now with the valuable feedback offered by this kit, students, residents, and practicing physicians can learn how to generate the correct amount of air pressure needed to perform accurate pneumatic otoscopy to test for tympanic membrane mobility. Kit includes a pneumatic pressure gauge, two pneumatic ears with pressure tubing, and a package of approximately 100 eardrums.

**Ref.no R10901**

