

Head dissection, 4 parts

Life size head model is composed of 4 parts, as follows:

- Half brain, features the internal structure of the cerebrum, including blood vessels
- Half of the cerebellum
- Eye with optic nerve

The right side of the face is dissected in sagittal and horizontal section, showing many significant internal features of the skull and brain, as well as the entire oronasal cavity. Mounted on base.

Size: 18 x 25 x 23 cm

Weight: approx. 1 kg

Ref.no. C150



C150



C150



C130

Arteries of head

This model shows the pathway of the left external carotid artery, including collateral and terminal branches. Mounted on base.

Size: 20 x 15 x 23 cm

Weight: approx. 0.6 kg

Ref.no. C130



C131

Nerves of head

This model shows the trigeminal nerve and its branches. Mounted on base.

Size: 20 x 15 x 20 cm

Weight: approx. 0.6 kg

Ref.no. C131



C132

Veins of head

This model shows the pathway of the left internal jugular vein in the cervical and head region, including the tributary venous branches. Mounted on base.

Size: 20 x 15 x 26 cm

Weight: approx. 0.6 kg

Ref.no. C132



Tongue and tongue tissue

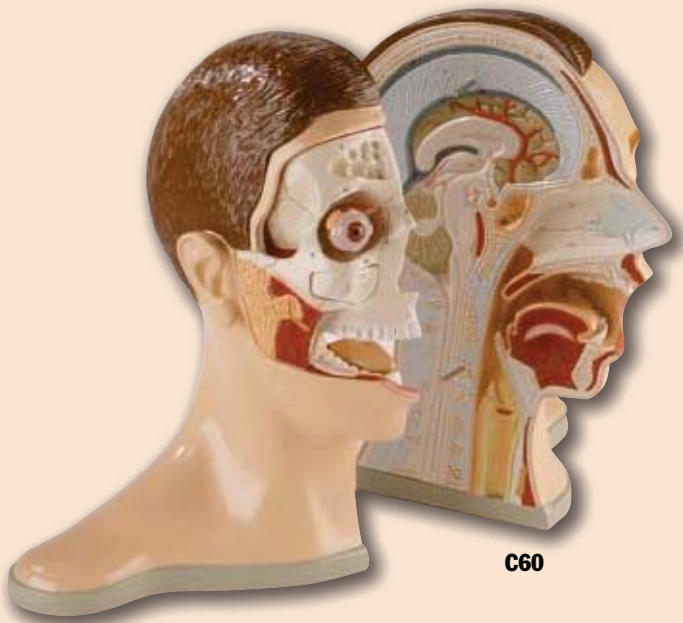
This item shows the anatomy of the life-size tongue, including the palatin and lingual tonsils, epiglottis and muscles. The model also includes a detailed 20X life-size enlargement of the tongue tissue to show its histology: taste buds, lingual and mucous glands, crypt and muscles are well represented. Mounted on base.

Size: 33 x 22.5 x 11 cm

Weight: 1240 g

Ref.no. C66





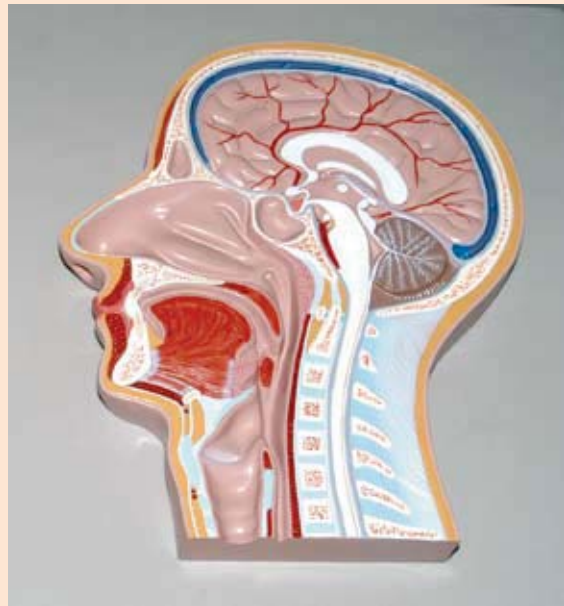
C60

Head and Neck, 5-part

Representation of a head, medially divided. The skin and facial muscles of the right outer half are removed to show the deeper structures. Eyeball, bone cover over the sinus maxillaries and right tongue half are removable.

Size: 38 x 40 x 28 cm

Ref.no. C60



Median section of the head (relief model)

Life size representation of the superficial and the internal structures of the head and neck. This relief model shows all relevant structures of the human head in great detail. Mounted on board.

Size: 33 x 23 x 5 cm

Weight: approx. 1.1 kg

Ref.no. C112



Frontal and median section of the head (relief model)

Life size representation of the superficial and the internal structures of the head and neck. Comparison between frontal and median sections provides a superior understanding of the anatomical structures of the head and neck. Mounted on board.

Size: 53 x 38 x 6 cm

Weight: approx. 1.8 kg

Ref.no. C113



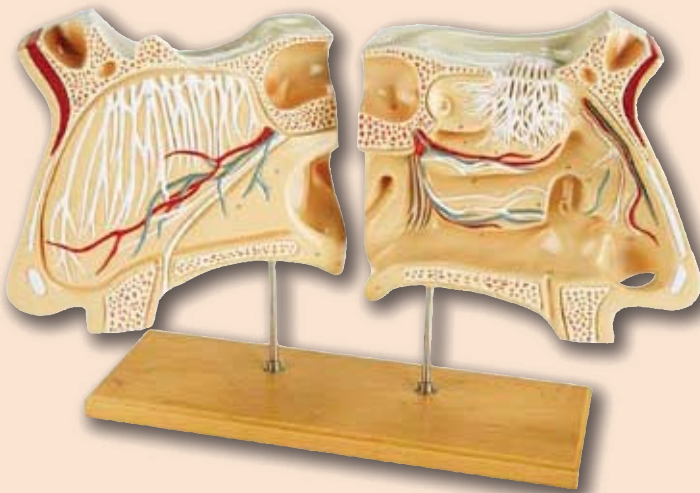
C80

Nose and sinus model

This cut-away model depicts a near median section through the nose and nasal passages. Details include nasal cavity, soft & hard palate, uvula and pharyngeal tonsil. Back side shows ethmoid and maxillary sinus cavities.

Size: 12 x 2 x 14 cm

Ref.no. C80



C70

Nose and Olfactory organ, 4 times life size

The nose halves are medially divided, from the base of the skull to the gum.

Shown are:

- Nose septum with vessels and nerves (right side)
- All structures of the inner nasal cavity (left side)
- Sinus and the opening of the Eustachian tube (left side)

Parts are numbered and the model is mounted on a wooden base.

Ref.no. C70



C182

Nasal cavity, 3 parts

3X life size; model shows a medial section of the nasal cavity. The nasal septum and part of the olfactory epithelium are removable to expose deep internal structures. Mounted on base.

Size: 23.5 x 6.5 x 28.5 cm

Weight: approx. 1.3 kg

Ref.no. C182

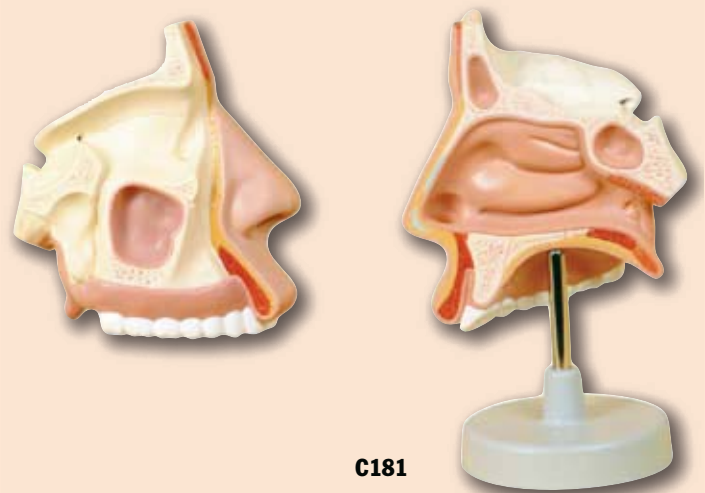


LM05

Transparent model nose

Using this transparent model, it is possible to understand at a glance and explain simply the complex structure of the nasal cavities. The three-part model can be taken apart (two halves and a dividing plate). A versatile model for patient information or medical training. The model is flexible and can be used for the most diverse exercises. Very good also for planning of surgery.

Ref.no. LM05



C181

Nasal cavity

This life size model shows a section of the nasal cavity. Mounted on base.

Size: 16.5 x 4.5 x 14.5 cm

Weight: 0.4 kg

Ref.no. C181